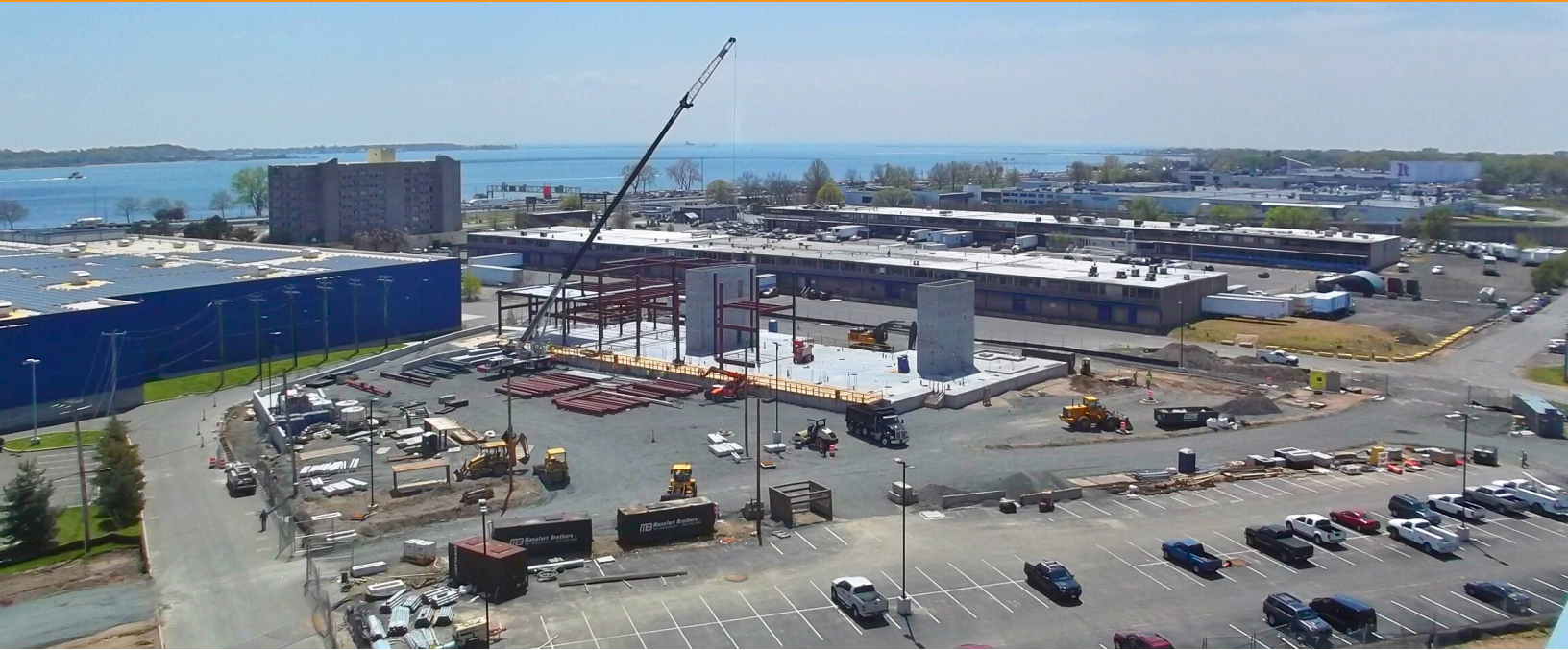




MANAFORT BROTHERS INCORPORATED

CTDOT NEW HAVEN RAIL YARD MAINTENANCE OF WAY BUILDING

Rail & Mass Transit



PROJECT

CTDOT New Haven Rail Yard Maintenance of Way Building

MARKETS

Rail & Mass Transit
Civil & Utility
Concrete

CONTRACT TYPE

Specialty Contractor

PROJECT OWNER

The Connecticut Department of Transportation

LOCATION

New Haven, CT

CTDOT Project 0301-0124 – New Haven Rail Yard Maintenance of Way Building located in the Metro-North New Haven Rail Yard in close proximity to New Haven Union Station, involved the construction of a new 25,000 square foot maintenance facility for the Metro-North Railroad personnel who maintain the main line and rail yard infrastructure as well as the locomotives. Manafort Brothers, Inc. was selected as a specialty contractor to perform the civil & utility work for the new Metro-North Railroad maintenance facility and employee parking lot as well as the associated utility and roadway relocations.

Manafort's civil & utility scope of work included 259 permanent precast concrete pile foundations, support of excavation, structural excavation for building foundations, extensive contaminated dewatering, handling and disposal, contaminated soil disposal, transformer pads, electrical ductbank, telecommunications ductbank, gas service, sanitary sewer connections, storm drainage improvements, fire and domestic water utility services, excavation and backfill of interior underslab utilities, site lighting, curbing, landscaping, asphalt pavement, and pavement markings.

Manafort's concrete scope of work included the site finishes such as exterior bollards, equipment pads, sidewalks, and concrete pavement.

Manafort diligently coordinated with the construction manager, the CTDOT, the Metro-North Railroad, and all project stakeholders to perform the extensive civil & utility work for this project and self-performed the majority of the scope of work. All work was completed safely, successfully, on-time, and on-budget.



CORPORATE OFFICE

414 New Britain Avenue,
PO Box 99
Plainville, CT 06062
Phone: 860.229.4853

REGIONAL OFFICE

265 Southwest Cutoff
Worcester, MA 01604
Phone: 774.512.3800

REGIONAL OFFICE

24 Martin Street
Cumberland, RI 02864
Phone: 401.333.2550

REGIONAL OFFICE

318 Bear Hill Road, Suite 10
Waltham, MA 02451
Phone: 781.328.2365

REGIONAL OFFICE

204 Mill Street
Bristol, PA 19007
Phone: 267.812.5454

WWW.MANAFORT.COM